

WWW.PROTECHAUDIO.COM

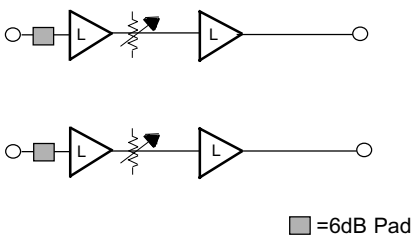
All Quicktrack products use a consistent ground scheme. The MXT-1 power supply provides the necessary ground conductor. Power supplies without the 3rd conductor ground should not be used with Quicktrack products.

CAUTION: Do not plug power supply into AC receptacle until the secondary conductors have been attached to the Quicktrack module. Doing so may cause the power supply conductors to short and damage the supply.

Installation steps for the Quicktrack modules are as follows;

- 1- Remove the cover screw (All modules except MX410) and cover.
- 2- Press down on the lower edge of the Quicktrack mounting extrusion until the lower edge of the printed circuit assembly comes free.
- 3- Slip the printed circuit assembly out of the upper edge of the mounting extrusion.
- 4- Mount the Quicktrack mounting extrusion in an appropriate location, away from moisture, heat sources, and AC fields.
- 5- Connect all audio connections to the barrier connector using double conductor shielded cables designed for low level audio signals. Do not use multiple solid conductor cables.
- 6- Connect the 3 power supply conductors to the power supply connection points on the barrier connector.
- 7- Plug the power supply into an AC receptacle.
- 8- Check for proper illumination of the LED power indicator.
- 9- Adjust all audio levels as necessary.
- 10- Mount the cover onto the Quicktrack module being careful not to over-tighten the mounting screw.

MODEL MX412



The Model MX412 has two discrete line amplifier channels. Both channels have individually adjustable gain. The input gain can be increased by 6dB by removing push-on shunts (jumpers) at JP2 and JP3. Both inputs and outputs are electronically balanced. They may be used in either a balanced or unbalanced configuration. Requires low voltage AC power (See MXT-1).

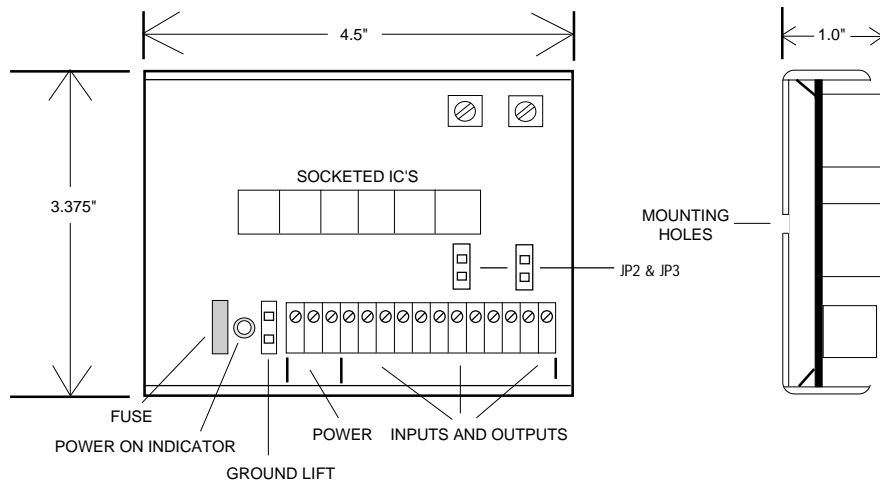
All initial adjustments on the MX412 are made at the factory. If after installing the unit higher or lower output levels are desired, adjust corresponding trimpots accordingly.

WWW.PROTECHAUDIO.COM

⊗	⊗	⊗	⊗	⊗	⊗	⊗	⊗	⊗	⊗	⊗	⊗	⊗	⊗
18 VAC	18 VAC	G N D	OUT #2 - +	OUT #1 - +	S H	N/C	IN #2 - +	S H	IN #1 - +				

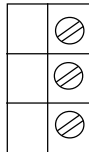
CONNECTIONS

ALL
QUICKTRACK
PRODUCTS
USE
CONSISTENT
GROUNDING
SCHEMES
AND
PACKAGING

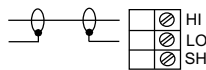


POWER FROM
MXT-1
TRANSFORMER

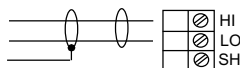
RED - AC
BLACK - AC
GREEN - (GND)



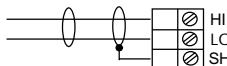
UNBALANCED LINE INPUT
CONNECTION



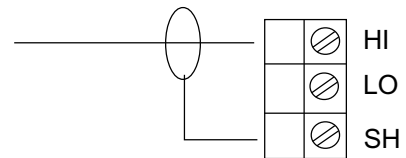
BALANCED LINE INPUT
CONNECTION



MICROPHONE INPUT
CONNECTION



UNBALANCED LINE OUTPUT
CONNECTION



BALANCED LINE OUTPUT
CONNECTION

