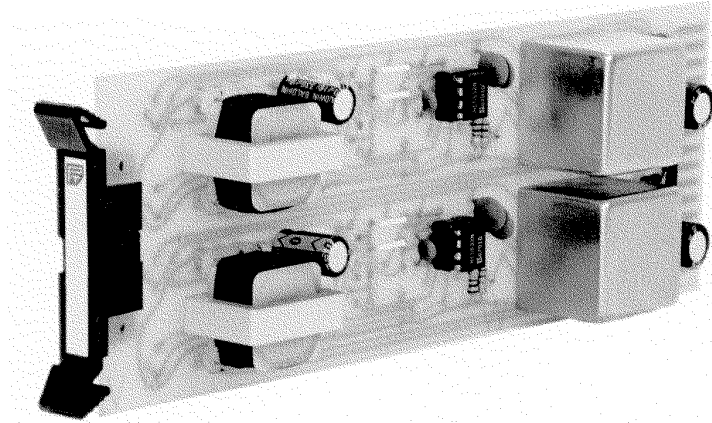


MICROPHONE PREAMPLIFIERS & LINE AMPLIFIERS SINGLE AND DUAL CHANNEL

- One or Two Channels.
- Transformer Isolated Inputs and Outputs.
- Choice of Gain Adjustment Styles.
- Modular Construction.
- Custom Units Available.



Model 816B Shown

www.protechaudio.com

The 800 Series Microphone Preamplifiers and Line Amplifiers are designed for use in professional audio applications. Each model has either one or two channels, designed to operate as a discrete microphone preamplifier or line amplifier. Dual channel cards will have two identical channels constructed on one printed circuit board.

Typical applications are public address systems, broadcast studios, sales presentation rooms, head-phone listening systems, multi-room audio systems, and recording systems. The actual application of the amplifiers is found in buildings such as airports, factories, courthouses, casinos, convention centers, libraries, hotels, racetracks, training systems, corporate boardrooms, etc...

The 800 Series Microphone Preamplifiers come in two different models. There is a single channel, model 808B, and dual channel, model 816B. Both models have low impedance transformer isolated inputs, and a push-on red jumper, per channel, to enable 15 volt phantom power. The gain of each channel is adjustable, from 17 to 56dB.

The output section is balanced, transformer isolated.

The 800 Series Line Amplifiers offer 4 different models, 2 single channel versions, and 2 dual channel versions.

The input section of the line amplifiers is available in two different impedances. These are; bridging balanced-transformer isolated (10K ohm input impedance), and 600 ohm balanced-transformer isolated. This allows the user to match the line amplifiers to a variety of professional audio equipment.

The trimpots used to adjust the gain levels of the microphone preamplifiers and line amplifiers are mounted on the accompanying backplane assembly. This feature allows the system gain settings to remain adjusted, even when a line amplifier is removed from its slot, and a spare unit is plugged into that slot.

The output section of the line amplifiers is balanced transformer isolated. On page 2 of this data sheet, you will find a table showing the model numbers, and features of each of the microphone preamplifiers, and the line amplifiers.

Each of these products is designed to provide the user with high quality audio, for years of uninterrupted service.

MICROPHONE PREAMP & LINE AMP CARDS

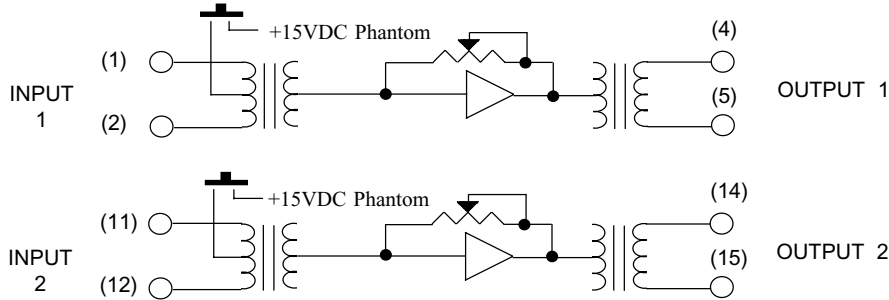
PROTECH[®]

Engineering Data 1/03

MICROPHONE PREAMPLIFIERS & LINE AMPLIFIERS

Block Diagram

Phantom Power
On Mic Input
Units Only.



PIN NUMBERS FOR 857B, & 858B BACKPLANES ONLY.

Specifications

MAXIMUM INPUT.....	Line Amps = +20dB, Mic preamp = -5dB
GAIN.....	Line Amp = -10dB To +20dB, Adjustable Mic Preamp = 17-56dB, Adjustable
MAXIMUM OUTPUT.....	+20dBm, All Models
FREQUENCY RESPONSE.....	30Hz To 20KHz, +0dB, -1dB
DISTORTION.....	0.1%, Maximum
THD + NOISE.....	Mic Preamp = -74dB Below +4dBm, 50dB Gain Line Amp = -89dB
POWER REQUIREMENTS.....	30ma, ±15-18VDC
SIZE.....	2.5"H x 8.0"D x 1.1"W

SPECIFICATIONS SUBJECT TO CHANGE WITHOUT NOTICE.

Model Numbers & Descriptions

	MODEL NUMBER	SINGLE CHANNEL	DUAL CHANNEL	INPUT TYPE	Notes:
MICROPHONE PREAMPS	MODEL808B	X		150 OHM	
	MODEL816B		X	150 OHM	
LINE AMPLIFIERS	MODEL 806B	X		600 OHM	
	MODEL 807B	X		10K OHM	
	MODEL 814B	X	X	600 OHM	
	MODEL 815B	X	X	10K OHM	

ARCHITECT'S & ENGINEER'S SPECIFICATIONS

The (line or pre) amplifier shall be constructed as a plug-in printed circuit board module. It shall be designed to allow up to 10 modules to fit in a rack mount card frame, requiring no more than 3.5 inches of vertical rack space. The (line or pre) amplifier shall be unpluggable from the front of the card frame, without the need to disconnect wires attached to the rear connector.

Each (line or pre) amplifier module shall contain (one or two) input(s).

The input(s) shall be balanced transformer isolated.

The gain of each channel shall be independently adjustable via a trimpot mounted on the corresponding backplane assembly.

The output(s) shall be balanced transformer isolated, capable of driving a 600 ohm-15K ohm line to +20dBm (Ref. 1 KHz).

The (line or pre) amplifier shall be PROTECH AUDIO CORP.

Model -806B, 807B, 808B, 814B, 815B, 816B

ACCESSORIES

CARD FRAME PACKAGE.....Model 858B
Includes Card Frame, Backplane, and Plug-In Power Supply Card.
Allows mounting of up to 9 audio cards.

CARD FRAME PACKAGE.....Model 857B
Includes Card Frame and Backplane Assembly. For use with external power supply Model 66708. Allows mounting of up to 10 audio cards.

Protech Audio Corporation
PO Box 597, 192 Cedar River Road
Indian Lake, New York 12842
Voice 518-648-6410 Fax 518-648-6395
Web - www.protechaudio.com

AUTHORIZED DEALER