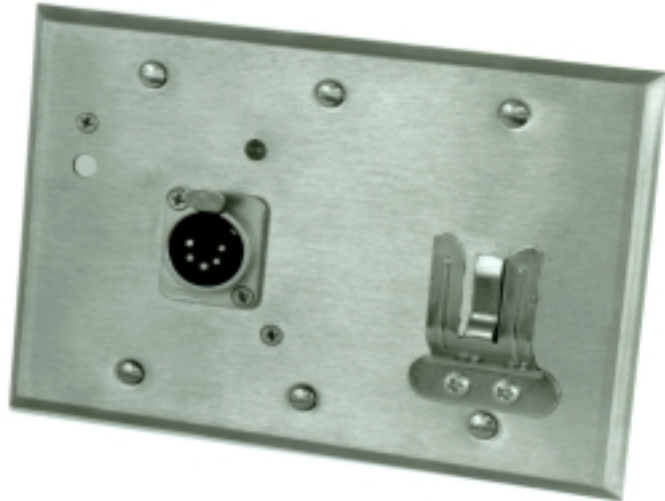


# MODEL 5053B

# REMOTE MICROPHONE STATION

- **Transformer Isolated In & Out**
- **Adjustable Gain**
- **Phantom Power Capability**
- **Stainless Steel Finish**



The Protech Audio Model 5053B Remote Microphone Station is designed for use in professional paging and communications systems. The unit is designed to amplify microphone level signals at the source, and prevent the serious degradation of signal-to-noise ratios normally found when microphone level signals are carried over long distances. Typical installations include airport terminals, mass transit stations, convention centers, ballrooms, arenas, industrial facilities, and theme parks.

The Model 5053B incorporates a number of features that allow the unit to perform in a variety of venues. The unit has a transformer balanced input, a transformer balanced output, adjustable gain, phantom power capability, and a busy buss indicator.

The input section starts with the panel mounted 5 pin female XLR connector. The connector allows wiring of any low impedance microphone with a push-to-talk switch. Pressing the push-to-talk switch activates an internal relay, which connects the output transformer to the output wiring. By disconnecting the output from the output wiring, many units can be wired to a single receiving device, without the problem of loading the line.

The XLR input connects to the low impedance microphone input transformer. The Model 5053B has provision for strapping of the center-tap on the transformer primary, to the 24VDC, to provide phantom power to microphones requiring that feature.

The gain of the op-amp section is adjustable, via a trimpot accessible thru the small hole in the upper left-hand corner of the front panel. Units are shipped with the gain adjusted for 45dB, into a 600 ohm load.

The output section consists of a relay, line output transformer, and an LED busy indicator. When the push-to-talk switch is pressed, the relay connects the transformer output to the output wiring connections. The LED busy indicator will also illuminate. If the busy buss terminal is connected to other Model 5053B units, all the indicators will illuminate whenever any of the remote microphone stations is in use.

For optimum performance, the Model 5053B requires a good earth ground. This can usually be provided with the 24VDC power supply ground. The installer should confirm that the power supply ground is carried to earth ground.

For additional information or applications assistance contact:

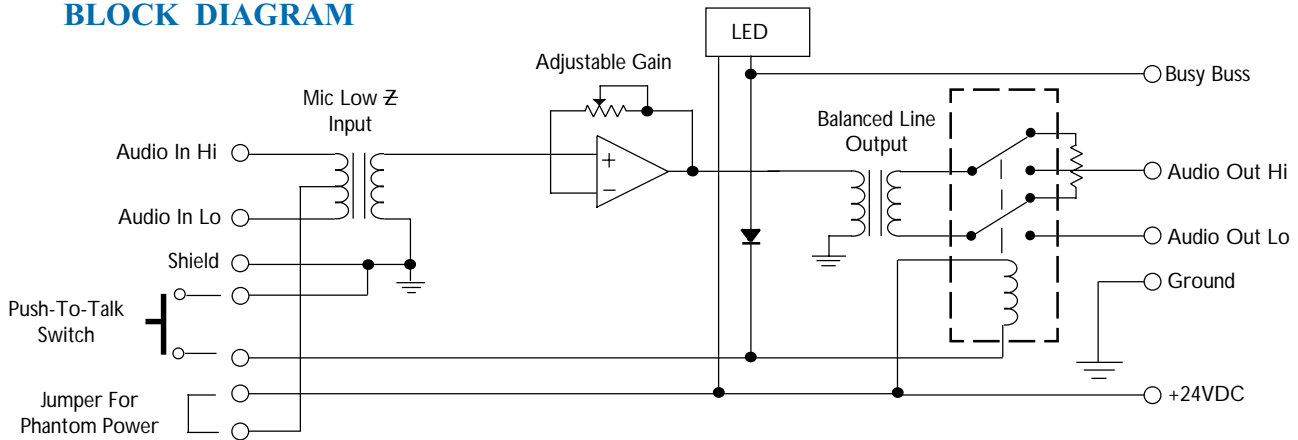
SALES ENGINEERING

REMOTE MICROPHONE STATION

**PROTECH**<sup>®</sup>

Engineering Data 1/06

**BLOCK DIAGRAM**



**SPECIFICATIONS**

GAIN.....	35 To 55dB, Adjustable
MAXIMUM INPUT LEVEL.....	-25dB
MAXIMUM OUTPUT LEVEL.....	+18dBm Into 10K Ohms +10dB Into 600 Ohms
INPUT IMPEDANCE.....	1.1K Ohms, For Use With Low Impedance Microphones, Nominal 150-600 Ohms
OUTPUT IMPEDANCE.....	300 Ohms
FREQUENCY RESPONSE.....	+0, -1dB, 30Hz To 16KHz, -2.5dB @ 20KHz
DISTORTION.....	0.1% Maximum
NOISE.....	-82dB Below Full Output
POWER REQUIREMENTS.....	24VDC @ 40ma.
SIZE.....	4.5"H x 6.375"W x 2"D, Designed For Mounting In Standard Triple Gang Electrical Box.
OPERATING TEMPERATURE.....	0 To +70 Degrees C

Specifications Subject To Change Without Notice.

**ARCHITECT'S & ENGINEER'S SPECIFICATIONS**

The remote microphone station shall be constructed to allow mounting in a standard EIA triple gang electrical box. The input connector shall be a 5 pin XLR type with locking clip. The front mounting plate of the remote microphone station shall be stainless steel, and have provision for mounting a microphone holding clip.

The remote microphone station shall have both, a transformer isolated input and output. The input transformer shall be low impedance. The unit shall have built-in provision for phantom powering of microphones.

The remote microphone station shall have an adjustable gain. The gain adjustment shall be accessible from the front of the unit, without the need for removable of any mechanical parts.

When not in use the transformer isolated output shall be disconnected from the output connector wiring.

The remote microphone station shall have an LED Busy Indicator, and a busy indicator buss.

The remote microphone station shall be:

Protech Audio Corporation Model 5053B

**ACCESSORIES**

INTEGRA III SYSTEM - Card Frame Audio System used for constructing audio systems requiring mixing, switching, distribution, remote volume control, dynamic processing, and power amplification. Building block concept allows maximum flexibility in design.

Model 65302 Ambient Noise Sensing Automatic Level Control - unit listens to ambient noise levels in paging areas, and automatically raises and lowers the paging and background music level to compensate for changes in ambient noise conditions.

**Protech Audio Corporation**  
 PO Box 597, 192 Cedar River Road  
 Indian Lake, New York 12842  
 Voice 518-648-6410 Fax 518-648-6395  
 Web - [www.protechaudio.com](http://www.protechaudio.com)

**AUTHORIZED DEALER**